



Botanical Garden
of the City of
Buenos Aires
“Carlos Thays”
125 years of
history

Rocío M. Contestin García

Map of The Botanical Garden “Carlos Thays”



Jardín Botánico
de la Ciudad
Carlos Thays



- A** Children's Nature Library
- B** Greenhouse N°1 (Collections)
- C** Greenhouse N°2 (Propagation)
- D** Greenhouse N°3 (Bulbous plants)
- E** Greenhouse N°4 (Cactii)
- F** Greenhouse N°5 (Succulents)
- G** Teaching Vegetable Garden
- H** Conference Room
- I** Archives
- J** Library
- S** Security
- ♿** Restrooms
- ▶** Entrance

- Systematic Collection
- Medicinal Plants
- Roman Garden
- French Garden
- Argentina
- Oceania
- America
- Asia
- Africa
- Europe
- Palm Grove
- Cycads
- Yerba Mate
- Butterfly Garden

Timeline

Carlos Thays arrives
in Argentina

Construction of The
Botanical Garden
begins

The principal
greenhouse arrives
at The Botanical
Garden

Today

1889

1892

1900

2023

1891

1898

1913

Thays becomes General Director of
Public Spaces for the City of Buenos
Aires

September 7, The Botanical
Garden opens to the public

Thays reaches the
end of his public
service



Yesterday ...



Carlos Thays with his children in The Botanical Garden
circa 1904.

Photo archive Thays family donated to the Historic Institute of the City of Buenos Aires



Carlos Thays in the yerba mate garden at
The Botanical Garden

... and today

The main greenhouse is considered to be one of the few of its type in conservation in the world.

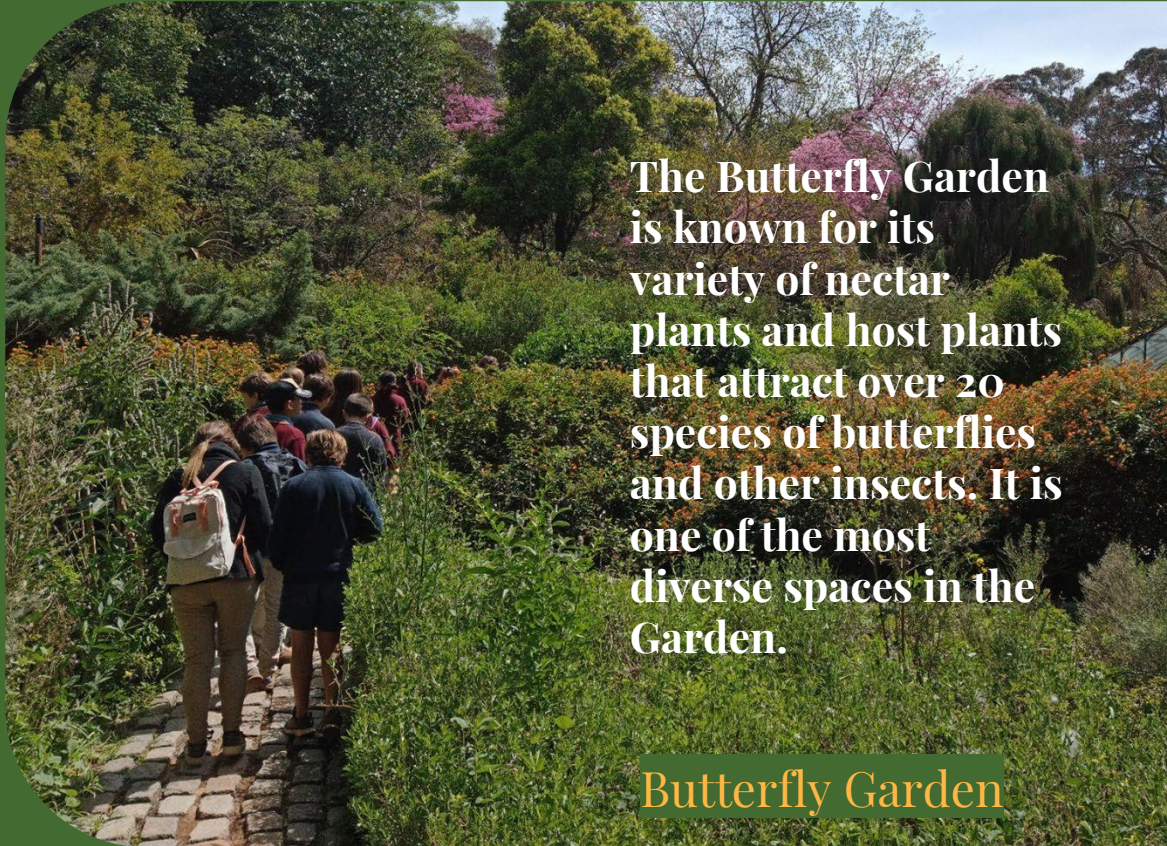
The structure of the greenhouse is made of iron with ornaments and an overlapping cupula in the central section with two rectangular side wings.

This same greenhouse, in the french Art Nouveau style, was exhibited at the World's Fair in Paris in 1889.



Greenhouse N°1

... and today



The Butterfly Garden is known for its variety of nectar plants and host plants that attract over 20 species of butterflies and other insects. It is one of the most diverse spaces in the Garden.

Butterfly Garden



... and



“Spring in the Garden”



“Nymph of the Río de la Plata”



... and today

French Garden



Roman Garden



The focal point in this symmetrical design is the central fountain and the greco-roman sculptures depicting Venus and Mercury.

This garden reflects the elements of symmetry, the use of marble statues and typical mediterranean vegetation.

Organization Chart

Mayor of the City of Buenos Aires



Secretariat of the Environment



Subsecretariat of Green Urban and Sustainable
Development Infrastructure Policies



General Administration in Areas of
Conservation



Operations Manager JBCT
(Graciela Barreiro)



JBCT in numbers

45 employees, 6 in education

80 volunteers and 70 interns assisting in education

500,000 visitors a year, of which 30,000 are students and docents



Educational Programs

- Mykuré in the Wonderful World of Plants
- Little Scientists
- Exploring Green
- Ecology in the Garden
- Native Flora of the Río de la Plata
- Teaching Vegetable Garden
- Guided Visits for Special Education
- Docent Training
- Botanical Expedition
- Self-Guided Tours



Urban Landscape

The city dresses in striking colors throughout the year.



Urban Landscape

Some of the species used by Thays in his urban landscapes, throughout many cities in Argentina, are native to various regions of the country.



Handroanthus impetiginosus



Jacarandá mimosifolia

Yunga Region



Tipuana tipu



Ceiba speciosa

Chaco Region

Iguazú National Park



In 1902, the Argentine Ministry of the Interior commissioned Carlos Thays to carry out a detailed survey of the falls. This was later used as the basis for the law that created that national park.

The Iguazú Falls are considered one of the 7 natural wonders of the world.

Yerba mate (*Ilex paraguariensis*)

Carlos Thays studied the method to produce yerba mate industrially.

Carlos Thays with a yerba mate plant



Small scale replica of a yerba mate plantation



A few works by Carlos Thays in Argentina



Salta
Parque 20 de febrero



Tucumán
Parque 9 de julio



Mendoza
Parque San Martín



Córdoba
Parque Sarmiento



Misiones

Parque Nacional Iguazú



Entre Ríos

Parque Urquiza



City of Buenos Aires

Parque Lezama



Parque Centenario



Parque Tres de Febrero



JBCT



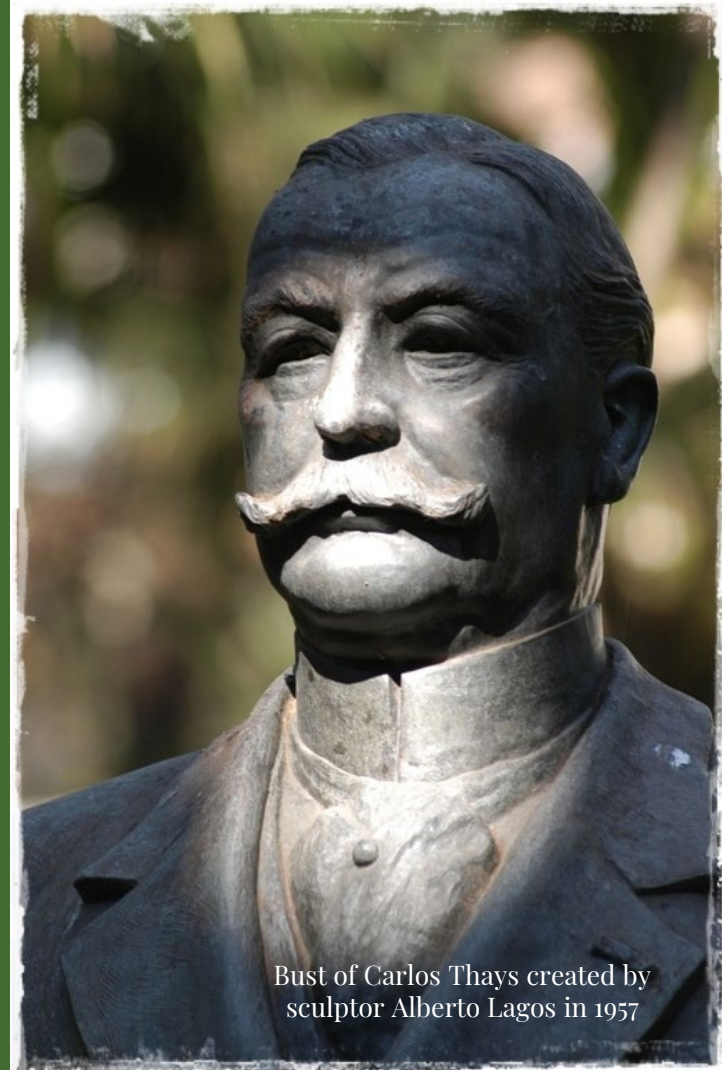
“Happiness nests more in
the nobility of a forest than
in luxury without green.”

Carlos Thays

IG JBCT

Web JBCT

Educational
Blog



Bust of Carlos Thays created by
sculptor Alberto Lagos in 1957